

CA 4

The current version of the installation and operating instructions is available in the Download Center:



<http://qr.duerdental.com/9000-606-44>



Ambient temperature



Upper moisture limit

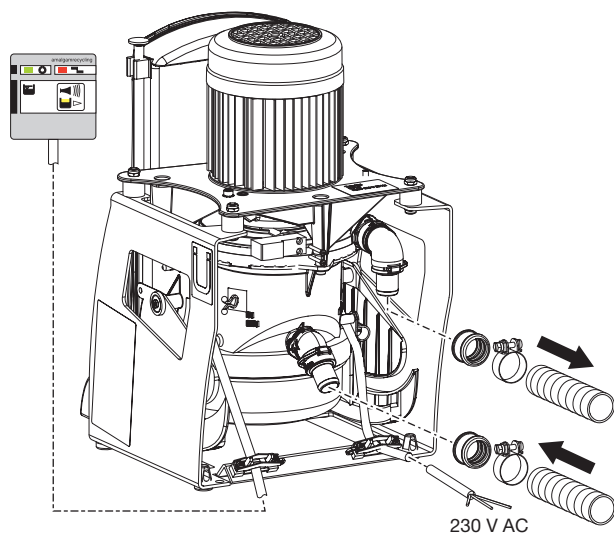


Only qualified specialists or employees trained by Dürr Dental are permitted to install, connect and start using the unit.



Assembly

1



2

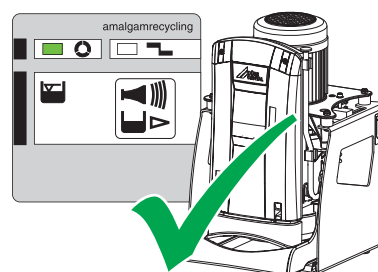


Use advantages and profit with security. Register your product now!

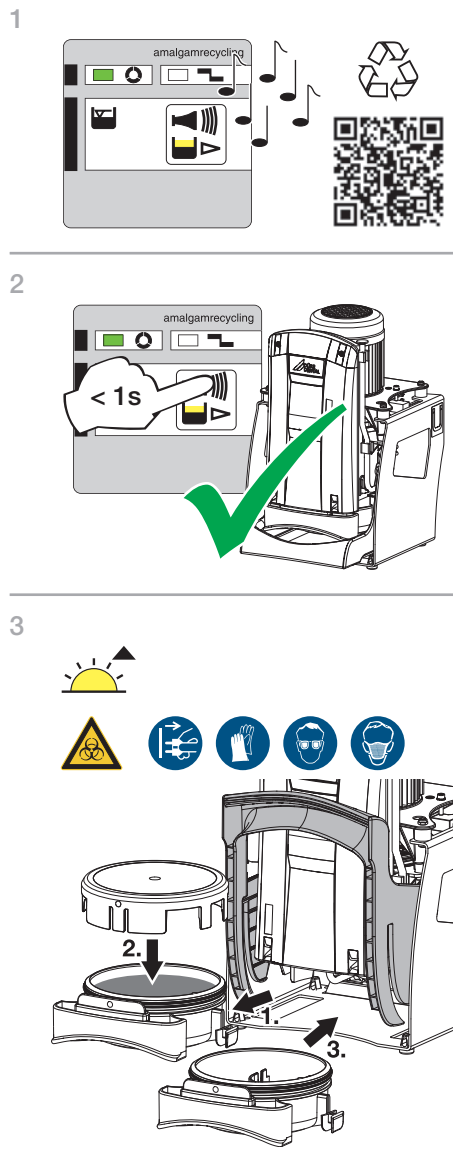
Usage

Ready for operation

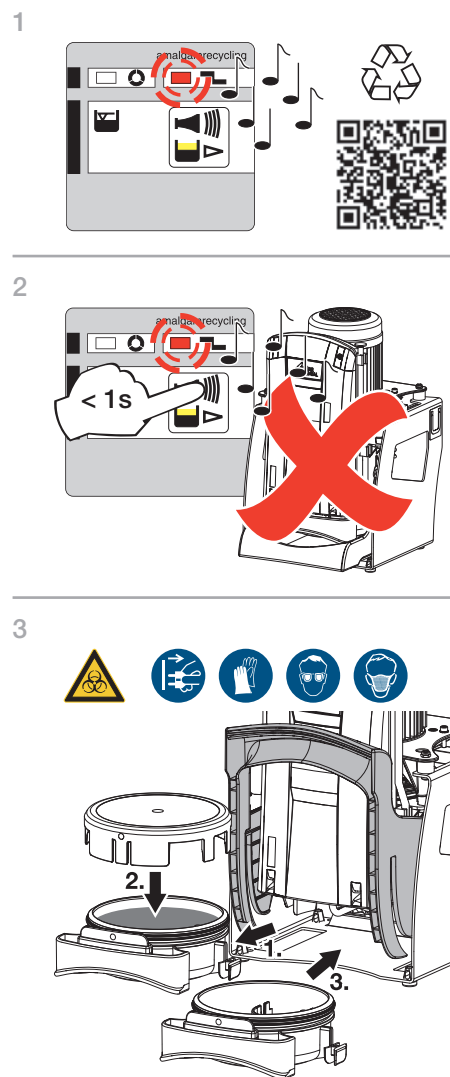
1



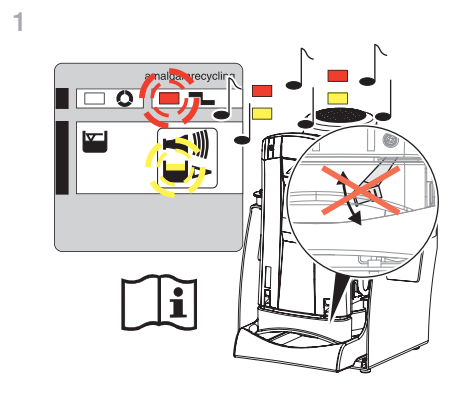
Amalgam collector vessel is 95% full



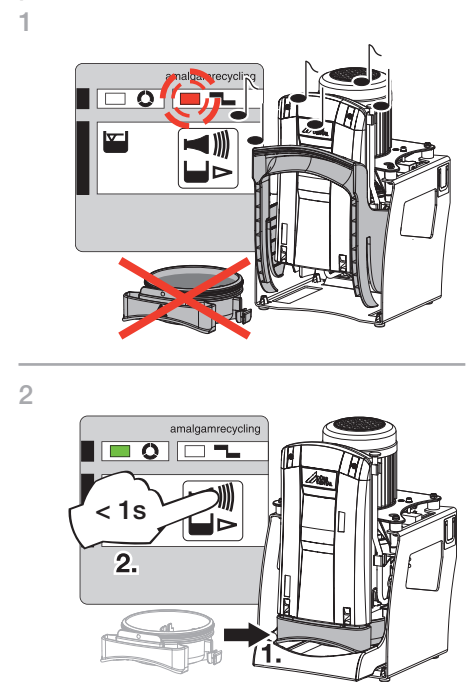
Amalgam collector vessel is 100% full



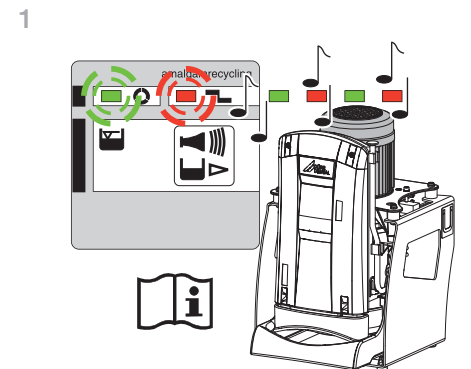
Fill level measurement fault



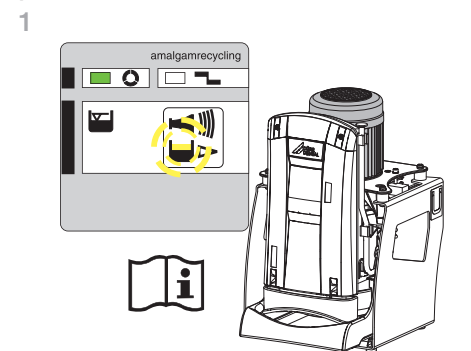
Amalgam collector vessel not in position



Motor fault

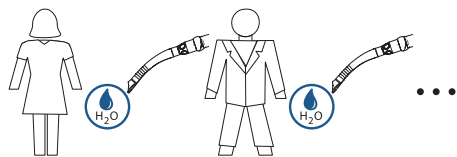


Emergency start sensor in overflow position



Disinfection and cleaning

After each patient: suction 0.5 l of water



Daily: disinfection

Daily in the evening after finishing treatment; twice daily with high loads.



Always use:

- Orotol plus / Orotol plus pH 7
- Unit care system, e.g. OroCup



Wear protective gloves.



Wear protective goggles.

1



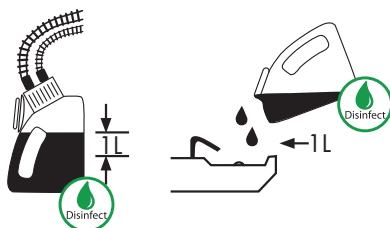
2



3



4



5



Cleaning: 2 x or 5 x per week

Min. 2 x per week, contact time 30 - 120 minutes

Alternatively: 5 x per week, contact time 5 - 15 minutes



Always use:

- MD 555 cleaner / MD 555 cleaner organic
- Unit care system, e.g. OroCup



Wear protective gloves.

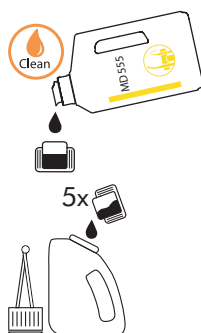


Wear protective goggles.

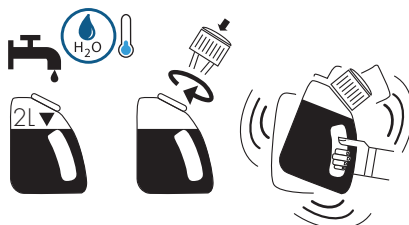
1



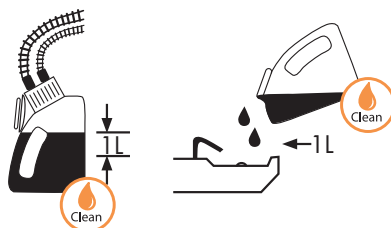
2



3



4



5

